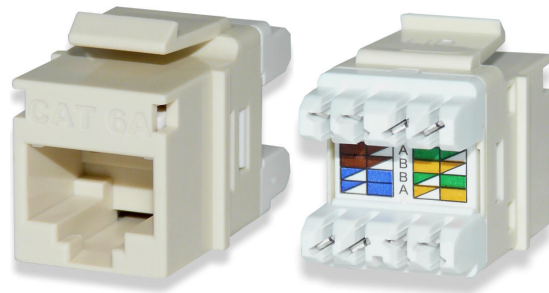


## Category 6A Unscreened Keystone Jacks

Signamax Connectivity Systems category 6A keystone jacks are designed to meet 10 Gigabit IEEE 802.3an rev. 1.0 transmission requirements, and are guaranteed to meet or exceed TIA-568-B.2-10 channel performance. Unscreened keystone jacks, enclosed in copper foil to eliminate alien crosstalk support category 6A 100-meter channel performance.

Category 6A keystone jacks are compatible with Signamax keystone faceplates, surface mount boxes, and 24- and 48-port snap-in patch panels providing flexibility in field installation.



### KEY FEATURES

- Designed to meet 10G IEEE 802.3an transmission requirements
- Guaranteed to meet or exceed TIA-568-B.2-10 channel performance
- Multi-purpose keystone design – equally suitable as a work area outlet and a patch panel port
- 180° high density – compatible with all Signamax keystone faceplates, surface mount boxes, and snap-in patch panels
- Rear 110 type contacts provide improved wire retention and ease of termination
- Terminated with standard single position 110 or Krone termination tools
- Support category 6A 100-meter channel performance
- Equipped with end cap enclosed in copper foil eliminating alien crosstalk
- Rated for at least 750 plug insertions providing for the highest level of system reliability
- Contact design provides enhanced plug to jack connection integrity and protects against damage caused by insertion of 4 or 6 position plugs
- T568A and T568B wiring with an easy to read color-code wiring label for maximum flexibility
- Have an ability to mount either color-coded icon tabs for service identification or dust covers to protect unused jacks from dust and other contaminants

### ORDERING INFORMATION

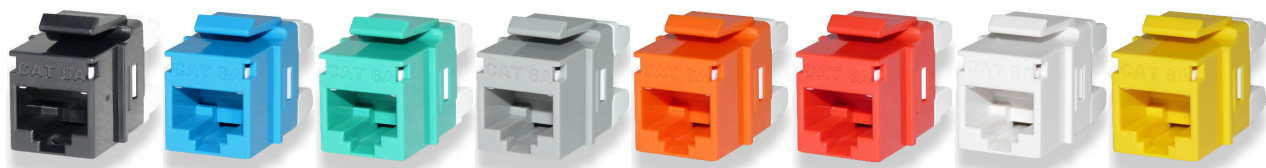
#### Category 6A Unscreened Keystone Jacks

Part Number	Description
-------------	-------------

KJ458-C6A      Category 6A Keystone Jack, T568A/B Wiring

*Standard color is Light Ivory. For other colors add following to P/N:*

-BK (Black)	-BU (Blue)	-GN (Green)	-GY (Gray)	-OR (Orange)	-RD (Red)	-WH (White)	-YE (Yellow)
-------------	------------	-------------	------------	--------------	-----------	-------------	--------------



SPECIFICATIONS

## Category 6A Unscreened Keystone Jacks

### SPECIFICATIONS

**TRANSMISSION PERFORMANCE**

ANSI/TIA-568-B.2-10: meets or exceeds category 6A (1 – 500 MHz) channel specifications

**TRANSMISSION MEDIA**

Unscreened twisted pair (UTP)

**JACK TYPE**

8p8c (8-position, 8-contact) "RJ45" type

**WIRING SCHEME**

ANSI/TIA/EIA-568-B.2: T568A & T568B

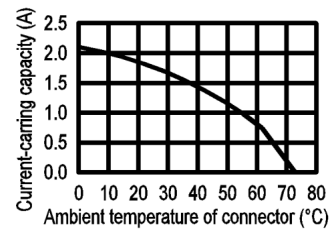
ISO/IEC 11801 2<sup>nd</sup> Ed.: 8-position pin/pair assignment (1-2/3-6/4-5/7-8)

**WIRE GAUGE**

22-24 AWG (0.644 – 0.511 mm)

**ELECTRICAL**

Insulation resistance: min 500 MOhm @ 100 V<sub>dc</sub>  
 Dielectric withstanding voltage: 1,000 V<sub>dc/ac</sub> peak contact to contact @ 60 Hz for 1 min  
 Spring wire contact resistance: max 20 Mohm  
 IDC contact resistance: max 2.5 MOhm  
 Current rating: see figure



**CONSTRUCTION**

Housing: high impact thermoplastic, UL94V-0 fire retardant  
 Jack spring wire: phosphor bronze alloy plated with 50 µin of gold over 70–100 µin of nickel  
 IDC: 110 type, phosphor bronze alloy with 100 µin 100% tin alloy

**MECHANICAL**

Total contact force: min 800 g for 8 wire leads  
 Retention: 50 N (11 lbf) for 60±5 s  
 Mating cycle life: min 750 cycles

**FOOTPRINT**

Standard keystone footprint

**MOUNTING DIMENSIONS:**

D 31.25 mm H 19.3 mm W 16.9 mm  
 D 1.23 in H 0.76 in W 0.67 in

**ENVIRONMENTAL CONDITIONS**

Storage: -40°C – +70°C (-40°F – +158°F)  
 Operation: -10°C – +60°C (+14°F – +140°F)  
 RH (operation): max non-condensing 93%

**COMPLIANCE**

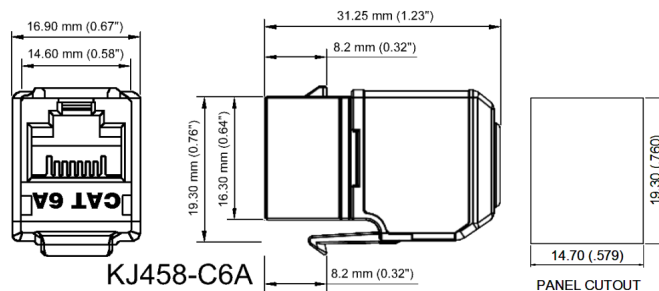
ANSI/TIA-568-B.2-10, IEE 802.3 ab, FCC Part 68 Subpart F, UL 94V-0, IEC 60603-7

**APPLICATIONS**

X.21, V.11, S0, ISDN, CSMA/CD 10BASE-T, 100BASE-TX, 100BASE-T4, 100BASE-T2, 1000BASE-T, 10GBASE-T, TR 4/16/100, 100BASE-VG, ATM LAN 25/51/155, TP-PMD

**WARRANTY**

5-year limited component warranty  
 10-year Signamax Link/Channel Warranty  
 15-year Signamax Extended Component Warranty  
 25-year Signamax Cabling System Warranty



### RELATED PRODUCTS

Product/Product Group	Spec Sheet #
Category 6A SL Unscreened Patch Panel _____	PSS.C6ASL-UTP-PP (A-OCT-08)
Category 6A SL Screened Patch Panel _____	PSS.C6ASL-FTP-PP (A-OCT-08)
Category 6A SL Screened Keystone Jacks _____	PSS.C6ASL-FTP-KJ (A-OCT-08)
Category 6A SL Unscreened Patch Cords _____	PSS.C6ASL-UTP-PC (A-OCT-08)
Category 6A SL Screened Patch Cords _____	PSS.C6ASL-FTP-PC (A-OCT-08)

SPECIFICATIONS